

No cost food

Wharton Trust – The Annexe

Free groceries donated from local supermarkets. First come, first served.

Wednesdays & Fridays: 9:30am.

Wharton Trust – Street Kitchen

Free hot meal and dessert to anyone over the age of 18.

Thursdays: 5pm.

The Annexe, Wharton Terrace, TS24 8NS.

Contact: [01429 866 095](tel:01429866095).

Nite Light CIC

Free market stall (food, hygiene essentials, household items and clothing).

Outside Titan House, York Road, TS26 9HL.

The first 2 Tuesdays of every month: 11am–1pm.

Kilmarnock Road Centre – Community Fridge

Free Community Fridge with limited frozen and fresh foods.

Emergency food parcels also available.

Kilmarnock Road Centre, 44 Kilmarnock Rd, TS25 3NU.

Mondays–Fridays: 9:00am–3:00pm.

Contact: [01429 868 008](tel:01429868008).

St Aidan's Kitchen

Hot food and free groceries to anyone experiencing financial difficulties.

St Aidan's Church, Oxford Street, TS25 1TB

Thursdays: 9.30 am.

Contact: [07494 038 230](tel:07494038230).

Communities of Hope

Free coffee, tea, toast, cake and chat. Warm space, open to everyone.

St Aidan's Church, Oxford Street, TS25 1TB

Fridays: 10am to 12pm

Food Pantry – Community Hub South

Food pantry of quality and nutritious donated food, free to access.

Wynyard Road, TS25 3LQ

(usually **Mondays:** 10am–6pm, **Tuesdays–Fridays:** 10am–4pm and

Saturdays: 10am–12pm).

Contact: [01429 272 631](tel:01429272631) or

communityhub.south@hartlepool.gov.uk

Low cost food

Poolie Time Exchange – Community Shop

Discounted food, personal hygiene and household items. Free

feminine hygiene and continence products available upon request.

Salaam Centre, Murray Street, Hartlepool, TS26 8PD.

Wednesdays: 10am–12pm.

Thursdays: 10am–2pm.

Fridays: 1pm–3pm.

Contact: thebigleaguecic@outlook.com.

All offers subject to availability and change, please check with the provider to avoid disappointment.

HOW TO USE THIS GUIDE



Any entry with this picture offers a meal.



Any entry with this picture offers food to cook at home.

Hartlepool Borough Council – Hardship Advice and Support for Residents

It is important that people know what help is available to them and how they can access it, so the Council now has a special web page:

www.hartlepool.gov.uk/hardship-support.

No cost food

Hartlepool United Community Foodbank

Free groceries and hygiene products. Community fridge, open to all.

Hartlepool United Football Ground, TS24 8BZ.

Mondays. **Contact:** [07497 204 960](tel:07497204960) to book an appointment.

Poolie Time Exchange – Salaam Centre

Free Community Pantry, available to anyone, limited availability.

Salaam Centre, Murray Street, TS26 8PD.

Wednesdays from 10am.

Call for one-off food collection: [07949 837 227](tel:07949837227).

Free Breakfast Club – Salaam Centre

Wednesday–Friday: 9am–12pm.

Hartlepool Borough Council – Household Support Fund

Household Support Fund Household essentials support.

Mondays – Thursdays: 9am–1pm and 2pm–5pm.

Fridays: 9am–1pm and 2pm–4:30pm.

Contact: hsf@hartlepool.gov.uk.

Food Cycle – Community Hub South

Free community 3-course meal. Come along as a guest or volunteer. Open to everyone.

Community Hub South, Wynyard Road, TS25 3LQ.

Mondays: 6:30pm. **Contact:** www.foodcycle.org.uk.

Poolie Time Exchange – Bovis House

Support around hardship/welfare – support in crisis situations.

Bovis House, TS24 7SE.

Mondays, Tuesdays, Thursdays.

Please contact: thebigleaguecic@outlook.com to arrange a time.

Hartlepool Foodbank (Trussell)

Foodbank voucher needed to access 3-day emergency food parcel.

Financial advisor onsite.

28 Church Street, TS24 7DH.

Tuesdays & Fridays: 11am–1:30pm. **Voucher required.**

Hartlepool Foodbank: [01429 405 543](tel:01429405543).

Welfare Support Team: [01429 806 895](tel:01429806895).

Hartlepool's Low/No Cost Food



HARTLEPOOL
FOOD
PARTNERSHIP

With thanks to our supporters:



Version 1 (07/04/25)

Low cost food

Community Kitchen – Community Hub South

Enjoy a sociable 2-course lunch for just £2, including refreshments, and kids eat free. No booking required.

Wynyard Road, TS25 3LQ

Thursdays: 12pm–1:30pm.

Contact: South Hub on [01429 272 631](tel:01429272631) or

communityhub.south@hartlepool.gov.uk



Belle Vue Sports Community Youth Centre

Discounted grocery bags £3; goods worth an estimated £30. Open to everyone. Limited availability.

Kendal Road, TS25 1QU.

Wednesdays: 12pm–1:30pm.

Contact: [01429 221 832](tel:01429221832).



Advice@Hart

Food parcels, fuel vouchers. Advice and support around benefits and financial empowerment.

81 Stranton, TS24 7QT.

Weekdays.

Please contact: [01429 748 010](tel:01429748010) to arrange a time; proof of ID and appointment required.



Friends of Stranton School – FareShare grocery bags

Discounted groceries available to parents of Stranton School. Family support entrance, Stranton School, Southburn Terrace, TS25 1SQ.

Wednesdays: 3:30pm.

Please contact: [07769 317 725](tel:07769317725) to arrange a collection.



ORB Centre Community Grocery Store

Members can sign up for £5 a year, then shop in store multiple times each week from just £5 each visit, saving up to £20 per shop.

Oxford Road Baptist Church, Caledonian Road, TS25 5LH.

Mon – Fri: 9:30am–4:30pm.

Contact: [01429 687 511](tel:01429687511).

Email: hartlepool@communitygrocery.org.uk.

Website: www.communitygrocery.org.uk/hartlepool.



Bread & Butter Thing – Food Club

The Bread & Butter Thing grocery bags. £30 of groceries for £8.50. Other options are available.

Text your name, postcode and location of hub to:

[07860 063 304](tel:07860063304) to become a member.



The Bread & Butter Thing – Headland Baptist Church

Baptist Street, Headland, TS24 0QN.

Wednesdays: 2.00pm – 2.30pm.



The Bread & Butter Thing – Community Hub South

Wynyard Road, TS25 3LQ.

Tuesdays: 2.00pm – 2.30pm.



The Bread & Butter Thing – Burbank Community Centre

Burbank Street, TS24 7LA.

Fridays: 1.30pm – 2.00pm.



The Bread & Butter Thing – Community Hub Central

124 York Road, TS26 9DE.

Thursdays: 12.00noon – 12.30pm.



The Bread & Butter Thing – West View Community Centre

Miers Avenue, West View, TS24 9JQ.

Mondays: 2.00pm – 2.30pm.



Map

No cost food

1. Hartlepool United Community Foodbank
2. Poolie Time Exchange – Salaam Centre / Free Breakfast Club – Salaam Centre
3. Food Cycle – Community Hub South
4. Poolie Time Exchange – Bovis House
5. Hartlepool Foodbank (Trussell)
6. Wharton Trust / Street Kitchen
7. Nite Light CIC
8. Kilmarnock Road Centre – Community Fridge
9. St Aidan's Kitchen
10. Communities of Hope
11. Food Pantry – Community Hub South

Low cost food

12. Poolie Time Exchange – Community Shop
13. Community Kitchen – Community Hub South
10. Belle Vue Sports Community Youth Centre
12. Advice@Hart
13. Friends of Stranton School – FareShare grocery bags
14. ORB Centre Community Grocery Store

Bread & Butter Thing – Food Club

15. Headland Baptist Church
16. Community Hub South
17. Burbank Community Centre
18. Community Hub Central
19. West View Community Centre

What is the Hartlepool Food Partnership?

We work in partnership with local individuals, businesses and groups to get healthy, affordable and sustainable food for all in Hartlepool. Everyone is welcome to be involved.

Find out more about us and our projects at:

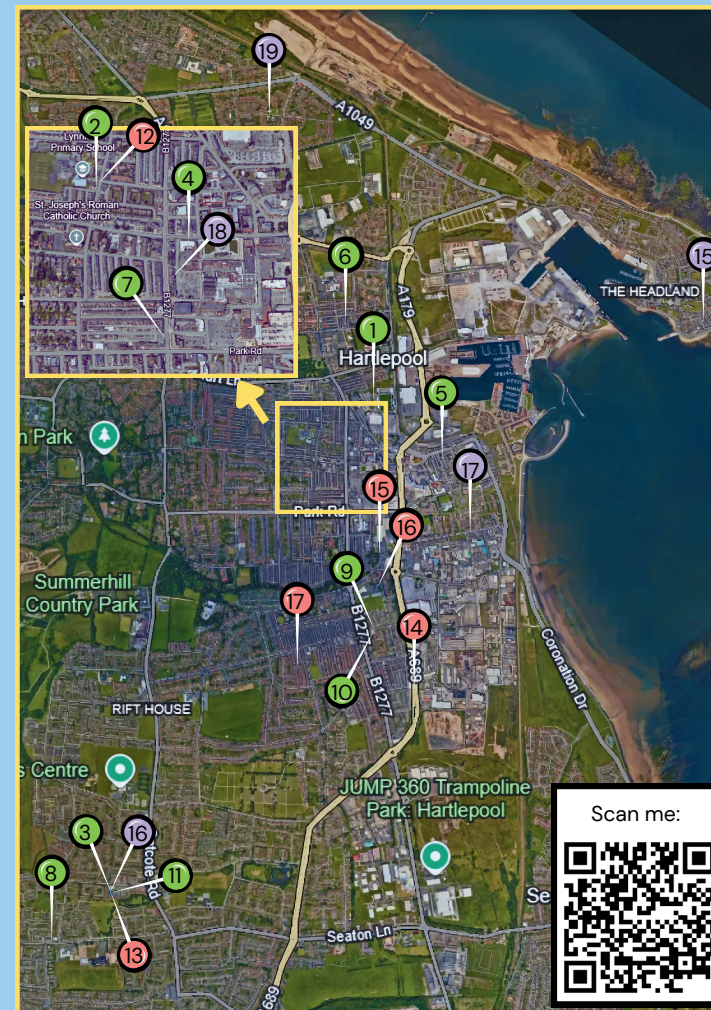
www.hartlepoolfoodpartnership.co.uk

Get in touch at:

info@hartlepoolfoodpartnership.co.uk



Map



Scan me:



Know someone who is worrying about money?

Advice and support is available to anyone in Hartlepool who needs help. To find out more about what is available in Hartlepool please head to: www.hartlepoolcommunitytrust.org.uk/financialsupport

Scan me:



Too Good To Go

Too Good to Go is an app that helps save food from being thrown away. Restaurants and stores put their extra food on there for cheap, so you can buy it instead of wasting it. It's like a surprise bag of goodies.

Scan me:

